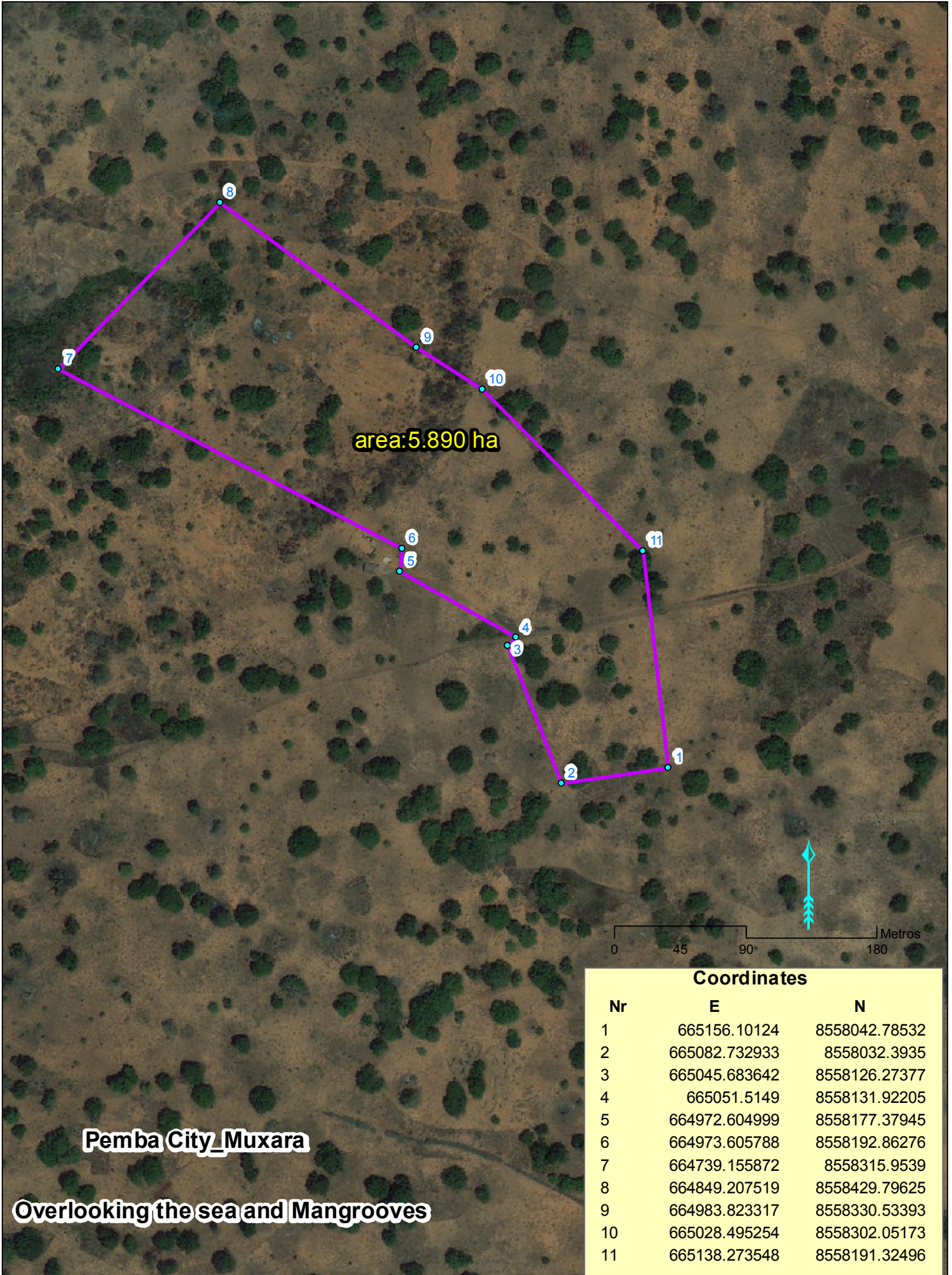
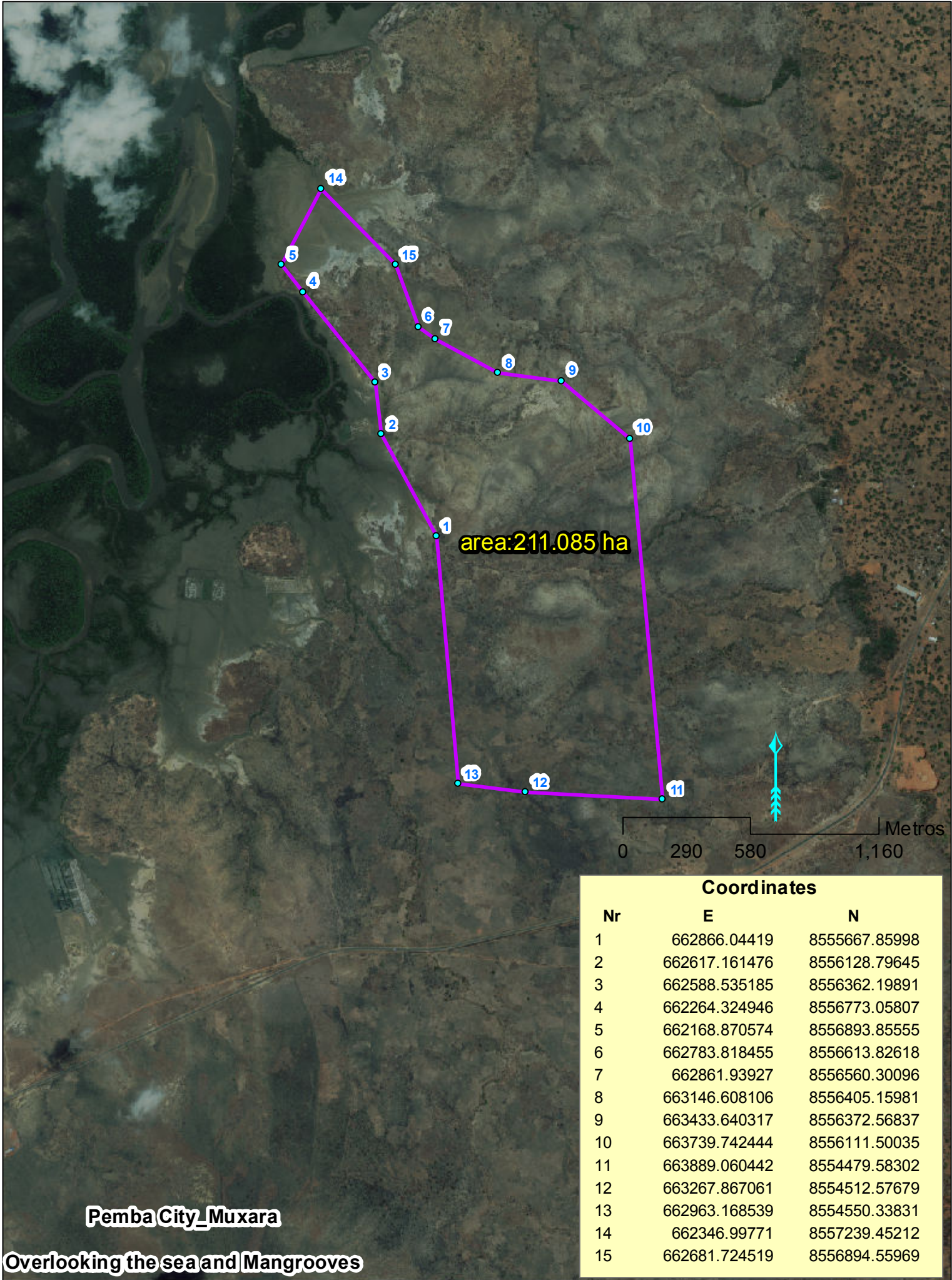


# Location plan of Land 1.1 Potential land for Tourism





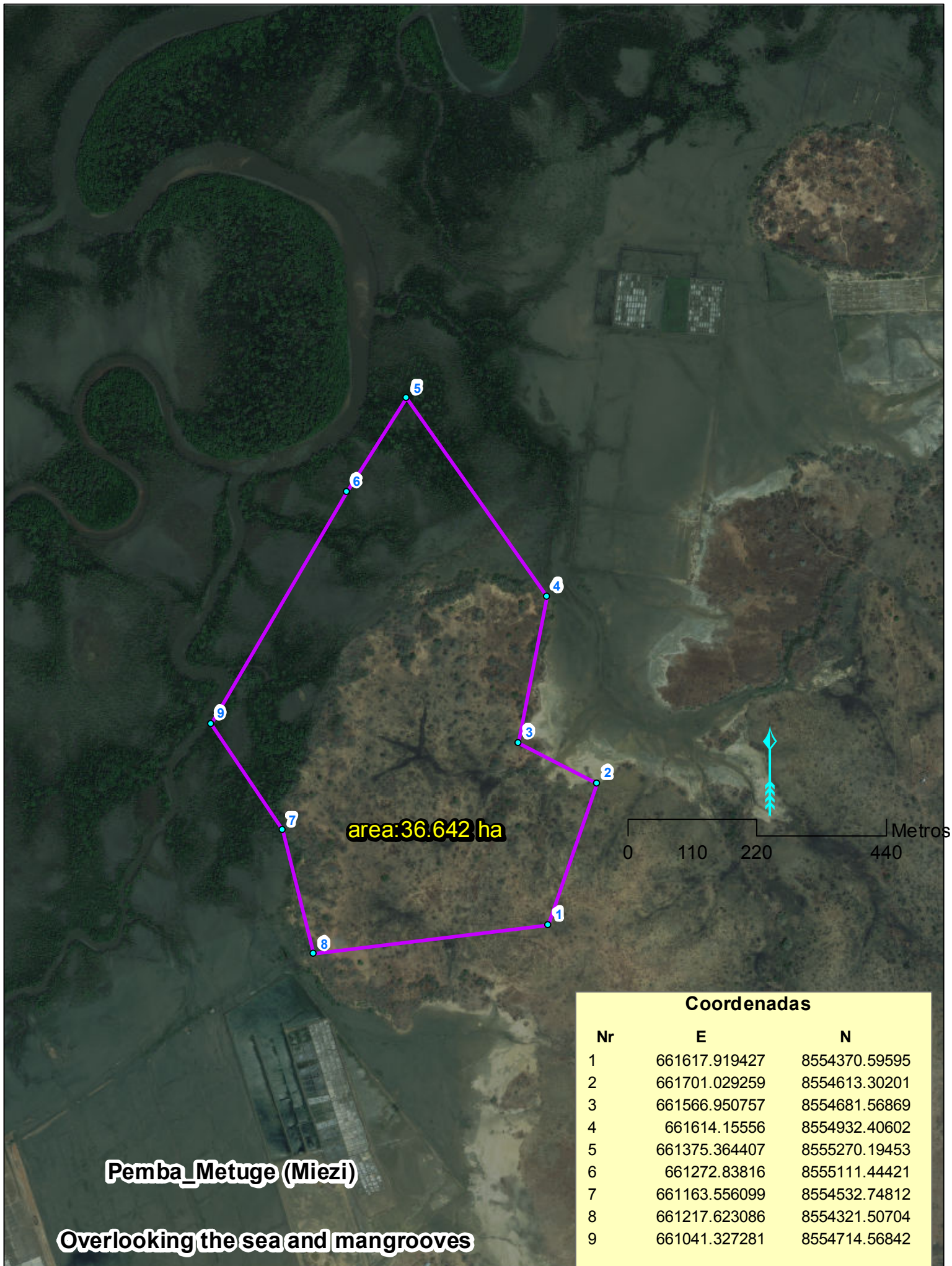
**Location plan of Land 1.2**  
**Potential land for Tourism, Condominium and other**



Coordinates		
Nr	E	N
1	662866.04419	8555667.85998
2	662617.161476	8556128.79645
3	662588.535185	8556362.19891
4	662264.324946	8556773.05807
5	662168.870574	8556893.85555
6	662783.818455	8556613.82618
7	662861.93927	8556560.30096
8	663146.608106	8556405.15981
9	663433.640317	8556372.56837
10	663739.742444	8556111.50035
11	663889.060442	8554479.58302
12	663267.867061	8554512.57679
13	662963.168539	8554550.33831
14	662346.99771	8557239.45212
15	662681.724519	8556894.55969



# Location plan of Land 1.3 Potential land for Tourism



area: 36.642 ha

0 110 220 440 Metros

### Coordenadas

Nr	E	N
1	661617.919427	8554370.59595
2	661701.029259	8554613.30201
3	661566.950757	8554681.56869
4	661614.15556	8554932.40602
5	661375.364407	8555270.19453
6	661272.83816	8555111.44421
7	661163.556099	8554532.74812
8	661217.623086	8554321.50704
9	661041.327281	8554714.56842

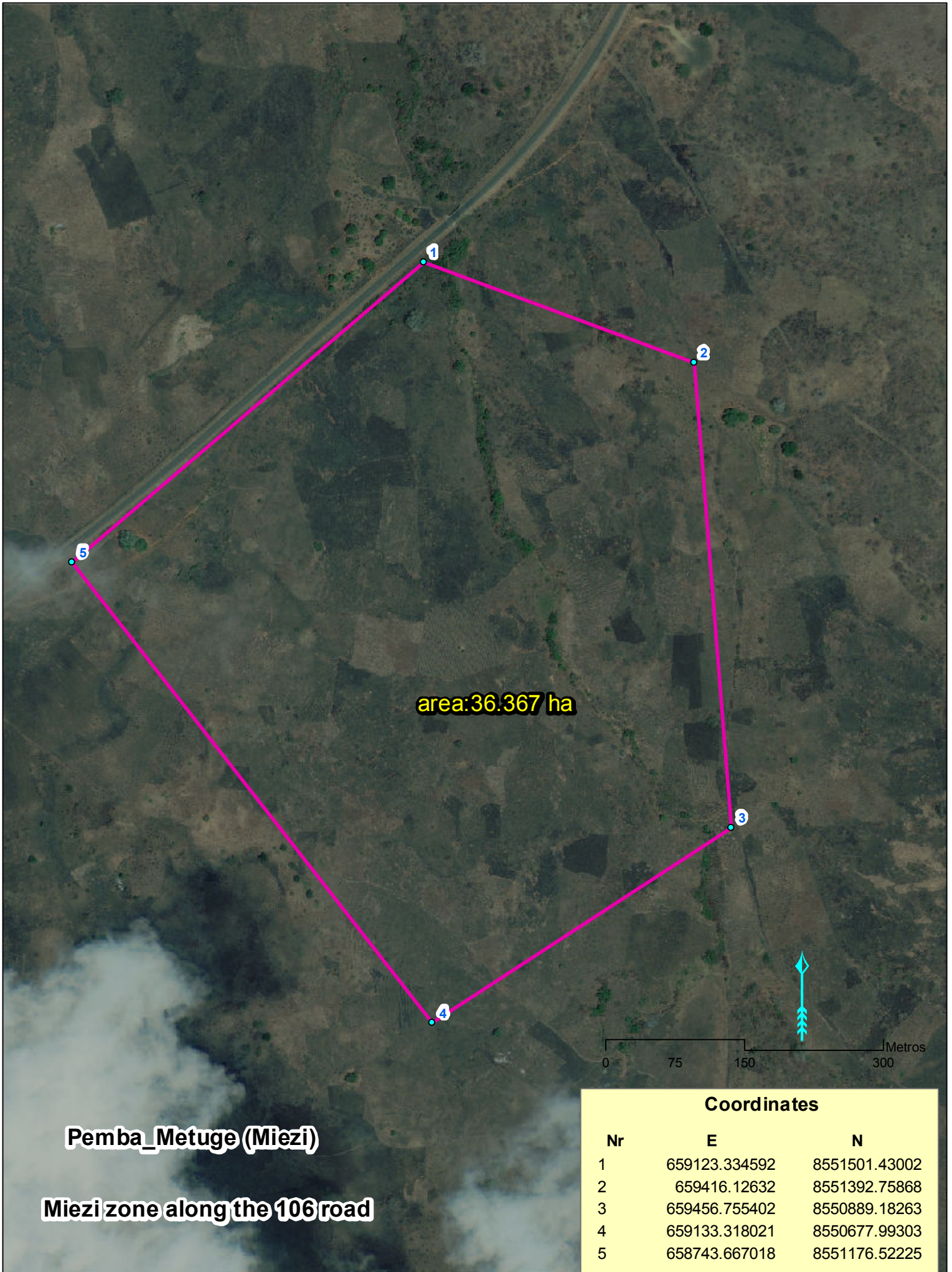
Pemba\_Metuge (Miezi)

Overlooking the sea and mangrooves



# Planta de Localização do terreno 1.4

Potential land for Tourism, Condominium, Shipyard, Industry and other





# Location plan of Land 2.1 Potential land for Tourism

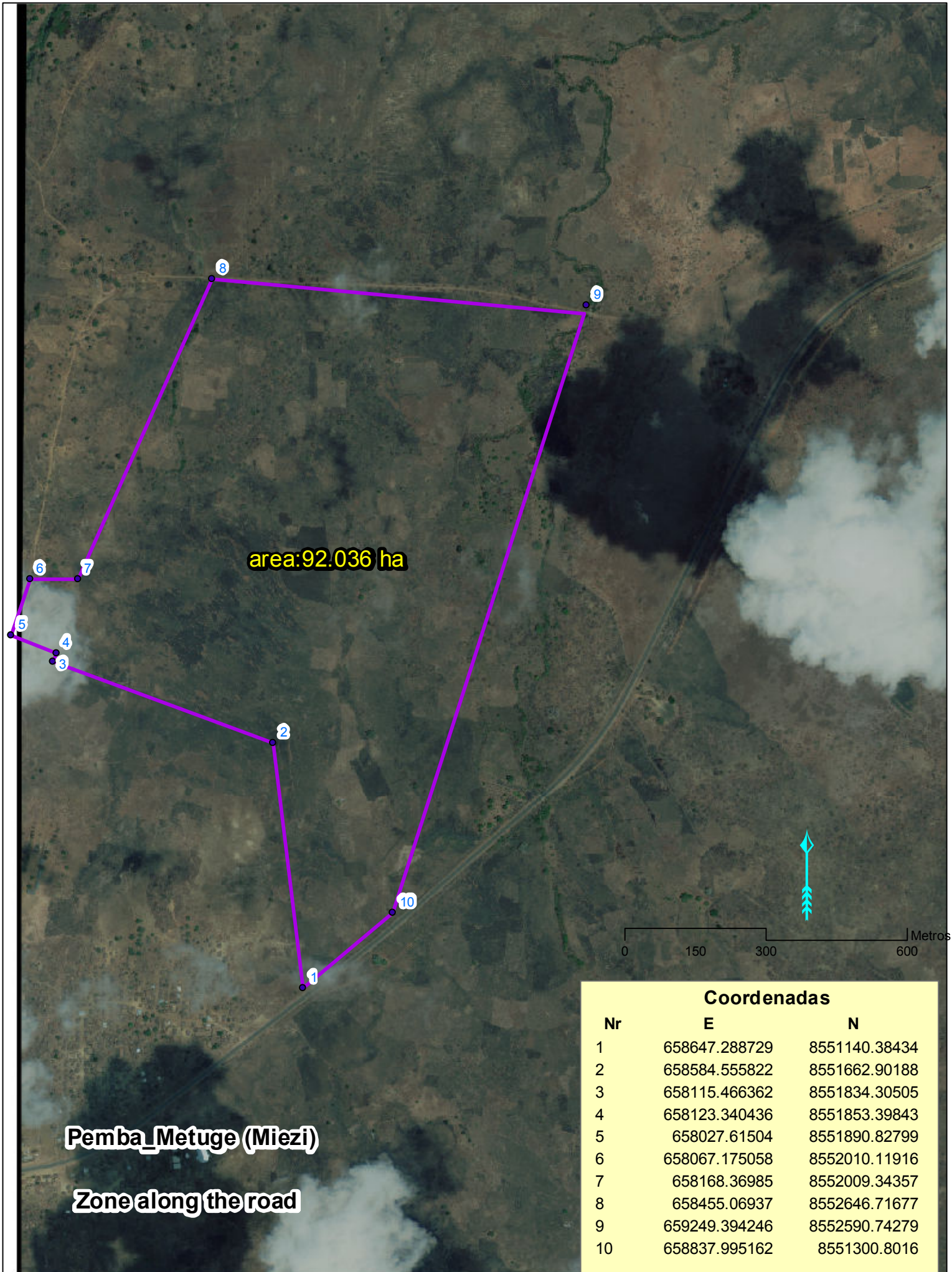


Coordinates		
Nr	E	N
1	663663.77533	8567539.45054
2	663643.957887	8567507.67338
3	663774.979815	8567432.53157
4	663789.735643	8567464.20897



# Location plan of Land 2.2

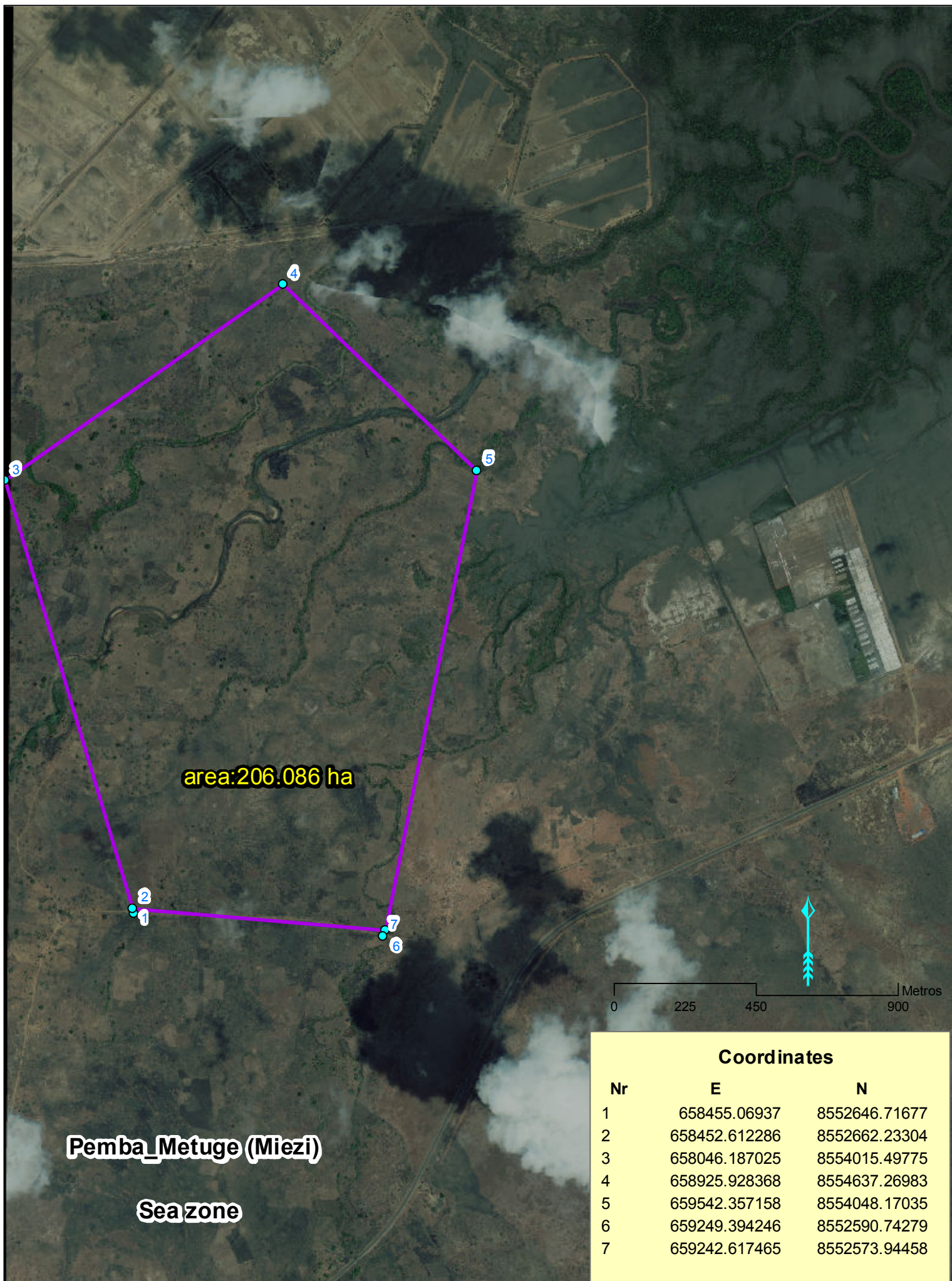
Potential land for Tourism, Condominium, Shipyard, Industry and other





# Location plan of Land 3.1

## Potential land for Tourism, Agriculture and other



Coordinates		
Nr	E	N
1	658455.06937	8552646.71677
2	658452.612286	8552662.23304
3	658046.187025	8554015.49775
4	658925.928368	8554637.26983
5	659542.357158	8554048.17035
6	659249.394246	8552590.74279
7	659242.617465	8552573.94458